



ELEVATE
NEW ENGLAND

IMPACT REPORT

Our



MISSION

Building long term, life changing relationships with New England's urban youth, equipping them to thrive and contribute to their communities.

VISION

Generations of thriving urban leaders





RHEA GORDON

EXECUTIVE DIRECTOR

Dear Friends,

On behalf of our entire team at Elevate, we wish you an exceptional beginning to this new year. 2022 was a year of significant steps forward, and almost always, a step up. We added new Teacher-Mentors to our team, along with a Data Impact Coordinator in our back office. We started a Teacher-Mentor in Training program, and filled it with 3 of our ENE college students. We added two new dynamic Board members. All of them I introduce below.

All of these steps are not to say that it was an easy year, but our attitude as we started the year was “together we rise.” And it turns out we did.

Moving from Elevate behind the scenes to Elevate out front, where it makes the difference, we can certainly affirm “together we rose.” Our TMs found new ways to support our students, and we have many more new students to mentor. We formed a Parent Engagement program which had three successful events and our first parent’s workshop. Our relationships deepened with school administrators. Lawrence High School’s Head of School Victor Caraballo-Anderson told me last fall. “I’d like to see Elevate New England expand deeper into Lawrence High, just as you’ve done in Lowell.” What that means is adding 200+ new students at his school, and many more at the feeder schools. This is a big goal we’ll be working on this year.

“

"I would like to see Elevate New England expand deeper into Lawrence High, just like you've done in Lowell."

”

Jim and I had opportunities to meet with several foundations and corporation leaders, and doors were opened. We will give you more information as the year develops. Whether behind the scenes of Elevate, or out front with our students in classrooms and mentoring, this report will give you the details I alluded to above. You'll also see our finance results and our impact/engagement numbers, but above all I hope it strengthens your resolve to stay with us in 2023.

This, our 7th year of operations, is going to be transformational. We see our budget growing; we see our numbers growing. But more importantly, we see the lives of our ENE kids take on a passion that is filled with hope and not heartache. We thank you for your support in being with us. Please contact me if you have any question about the numbers.

Faithfully yours,

Rhea Gordon

Rhea Gordon
Executive Director

2022 was a Record Breaking Year

2022		2021
1320	Students served	1045
99	Classes taught weekly	96
8400+	Mentoring hours	7680
15	Schools served	12
18	Staff	12
3	Teacher-Mentors in Training	0

2022 was a Record Breaking Year

2022		2021
1	Data Impact Coordinator	0
\$1,155,169	Income	\$862,548
100	Individual donors	75
10	Foundation grants	8
7	Corporate or business gifts	6

98% Graduation rate

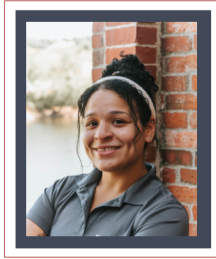
Cost per student: \$883

Budget for 2023: \$1,436,488

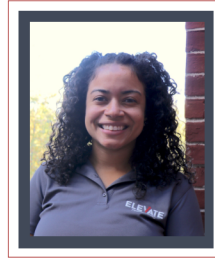
Meet our new Team Members



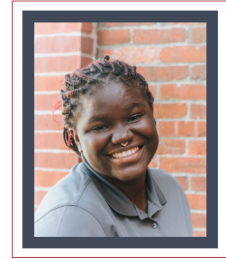
Gilbert Carreras
Teacher-Mentor



Karina Sanchez
Teacher-Mentor



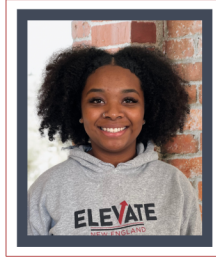
Melissa Cruz
Data Impact Coordinator



Edmire Kabia
Teacher-Mentor in Training



Amia Simari
Teacher-Mentor in Training

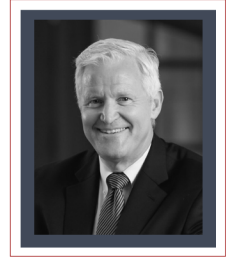


Demitria Peau
Teacher-Mentor in Training



Aaron Jennings
Board Member

Dr. Aaron Jennings is the Diversity, Equity and Excellence Officer from the Chelsea Ma public school system.



Jim Westra
Board Member

Jim Westra is the recently retired Managing Partner and Chief Legal Officer for Advent International Corporation.

FROM OUR SCHOOL

Administrators

"Elevate has worked this year to support the critical transition for several students coming from middle school to high school. The individualized attention, support of a small learning environment and creation of an encouraging cohort has aided these students in acclimating to high school. We look forward to continuing to watch the growth of these students into campus leaders, with the support and meaningful relationships with Elevate staff."

-Caitlin Gilligan, Head of Guidance, Lawrence High School

"The positive teacher mentor and student relationship continues to be the "it factor" for so many of our students in getting across the finish line of high school graduation and set up with their next step. It is awesome to see Teacher Mentors walking alongside students through their milestones and hearing our alumni report back on their successes in and beyond the classroom!"

-Lauren Campion, Director, Student Resource Center, Lowell Public School

"Elevate provides our students with opportunities to believe in themselves. Elevate helps our students develop their educational knowledge. They also provide them with the tools that are needed today and prepare them for a bright future."

-Dr. Maria Vejar, Dean, Lowell High School



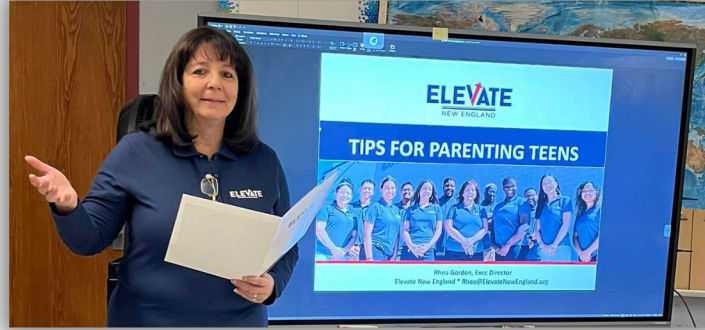
FROM OUR *Students*

"Goated Teacher-Mentors for real"
(Goat is acronym for Greatest of All Time)



"I feel like Elevate will help me with my career because the Teacher-Mentors are very motivational and I feel like it betters me as a person." -10th Grade Student

Parent ENGAGEMENT PROGRAM



"Our daughter participated in Elevate classes and she is now a freshman in college. She is majoring in education and she is aspiring to be a teacher.

While in Elevate she was taught leadership skills and was given the support she needed to achieve personal goals and the importance of community service.

Even beyond High School, she continues to have the support and mentorship from her teacher mentors. They truly care about her success as a person and academically.

As parents, this additional support, friendship and care for our daughter is overwhelmingly welcome and appreciated."

-Tracey Koch Frazier, Parent of an alum





No One Gets There Alone



www.elevatenewengland.org
rhea@elevatenewengland.org



Our Supporters

